

# SALE or LEASE

211 N. Meridian Ave  
Tampa, FL 33602

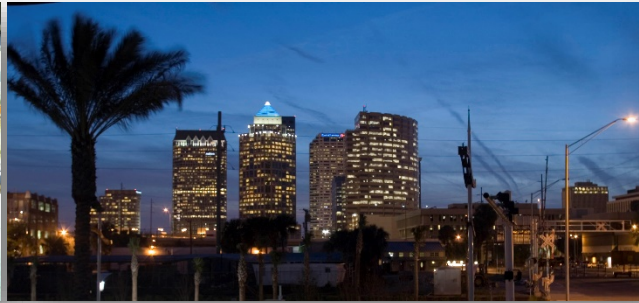
**\$3,775,000**

**\$13** PSF/Yr NNN

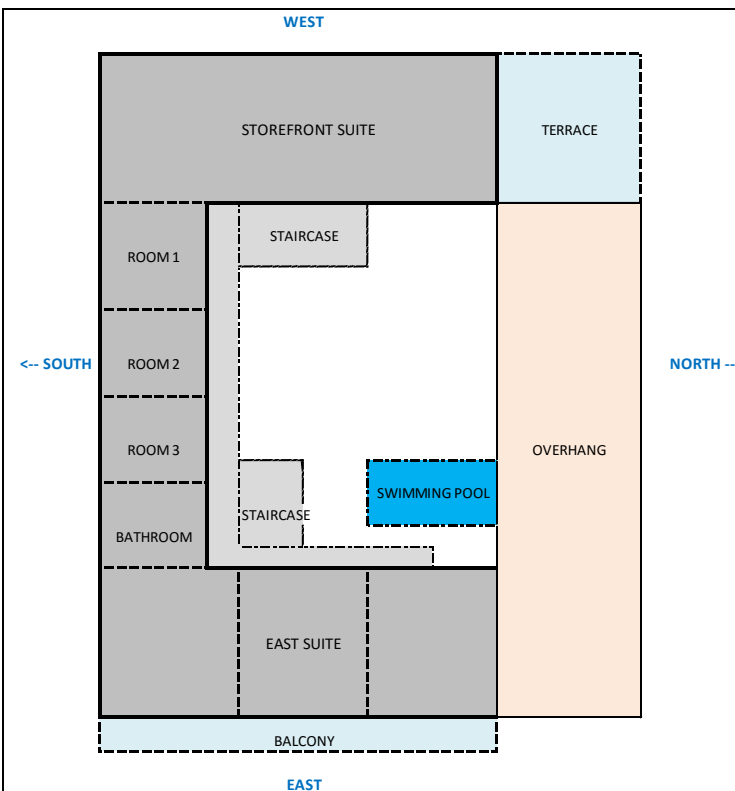
- Tampa's Downtown Channel District
- Crosstown Expressway, I-275, I-4
- 17,000 sf (0.4 ac) lot
- 4,000 sf Loft
- 7,000 sf Flex space
- Terrace and Balcony
- Ceilings: 9-23 ft

Great opportunity for a creative developer, business office, New York style residence(s), restaurant, bar, club or an innovative retailer.

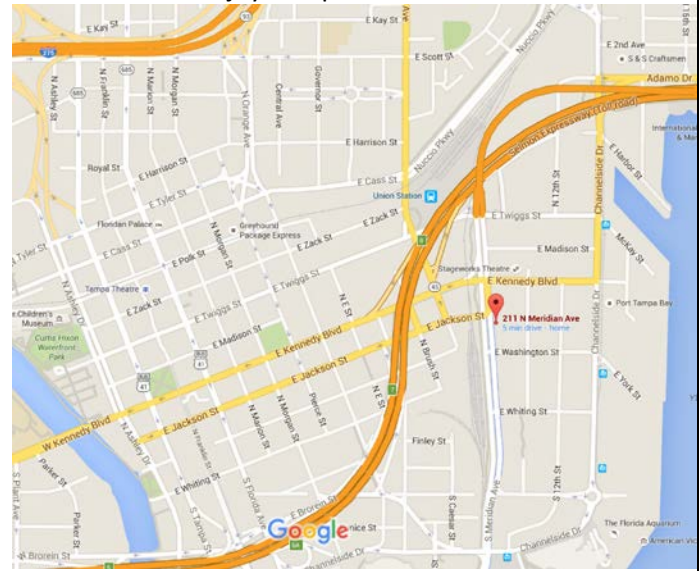
[www.211Meridian.com](http://www.211Meridian.com) | (813) 472-7772



Owner is seeking ideas for the best use of the property and will consider a sale, lease or a joint venture



Built in 2002 as a New York style loft residence, the property is now nestled between a condo complex and a soon-to-be built hotel. Large Meridian Avenue storefront provides fantastic views of downtown skyline and head-on exposure to incoming one-way traffic on Jackson Street. Enjoy Tampa and Go Bolts!



[www.211Meridian.com](http://www.211Meridian.com) | (813) 472-7772